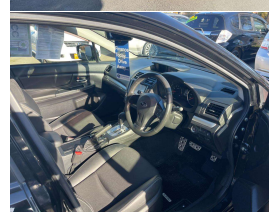
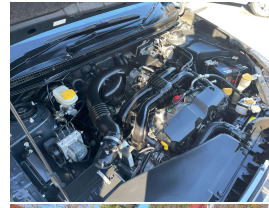


2012 Subaru Impreza Wagon 2.0i-S



VEHICLE INFORMATION

Cash Price

Includes GST,
Registration &
Licensing

\$13,995

Finance this vehicle
from only

\$90.04

per week*

Total Amount Payable

\$18,727.89



Gain peace of mind
with Mechanical
Breakdown Insurance.
Ask us how.

Body

5 door, Hatchback

Odometer

76,751 km

Engine

2000 cc

Fuel Type

Petrol

Transmission

AUTOMATIC TRANSMISSION

Wheels

-

VIN

7AT0GF09X22004002

Reg No.

-

Ext Colour

Black

History

-

Seats

-

Interior

Black

Audio

-

Stock ID

1767

Exterior Features

- » ALLOY WHEELS
- » KEYLESS ENTRY

Interior Features

- » Air Conditioning
- » CRUISE CONTROL !

Mechanical Features

**John Shelton
MOTORS**

John Shelton Motors, Phone 03 688 4064, Email jshelton@xtra.co.nz
79 King Street, Timaru 7910, New Zealand
www.johnsheltonmotors.co.nz

* Finance calculation based on a 48 month term, no deposit and with an example annual fixed interest rate of 13.95%. Actual interest rate may be higher or lower. Includes an establishment fee of \$296.00. Full term total amount payable of \$18,727.89. Estimate only, not an offer of finance. Terms, conditions and lending criteria apply.